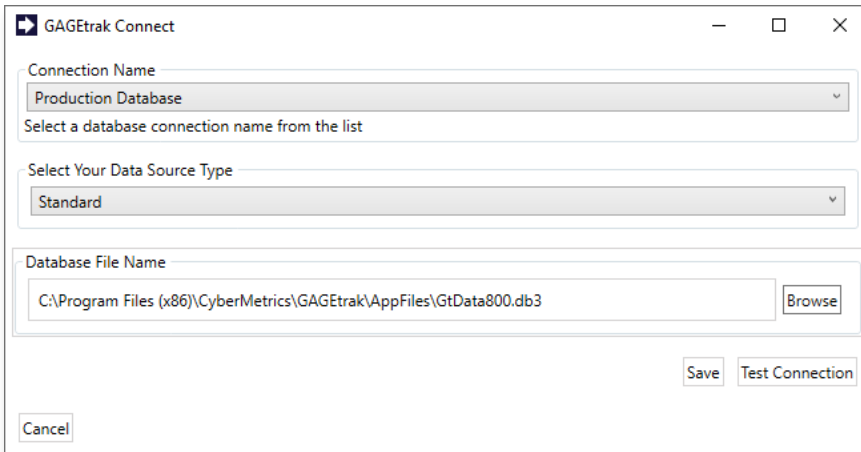


Software Update to Version 8.1.3

Thank you for updating your GAGetrak Lite software!

Before installing the update, please verify the location of your current database. To do this, click the caliper icon in the upper left corner of the program window and go to **Change Database -> Current Connection**. Your database location is displayed in the **Database File Name** field.

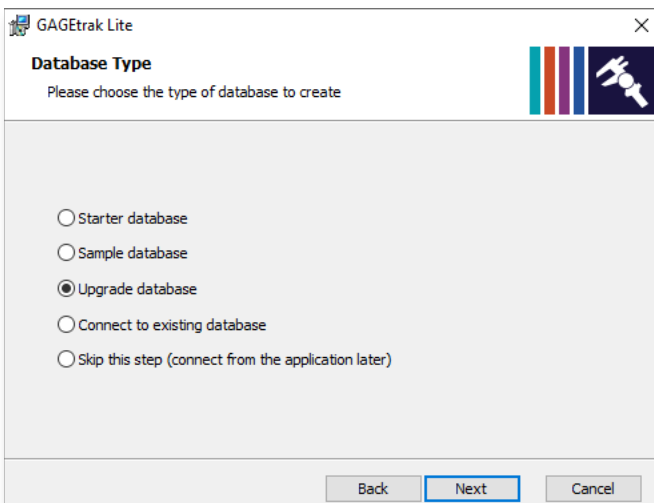


If you are updating from GAGetrak Lite version 8.1.0 or 8.1.2, you do not need to upgrade your database - simply choose the **Connect to existing database** option during installation.

If you are updating from version 8.0.x, then please follow the instructions below. You only need to run the **Upgrade database** utility once per database. **Do not run the Data Utility against data that has already been upgraded to the current version, or you will create multiple copies.**

Upgrade Database

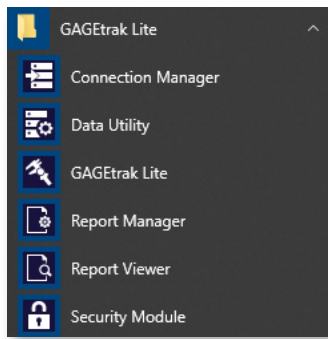
During the installation of GAGetrak Lite 8.1.3, you are given the opportunity to upgrade your database:



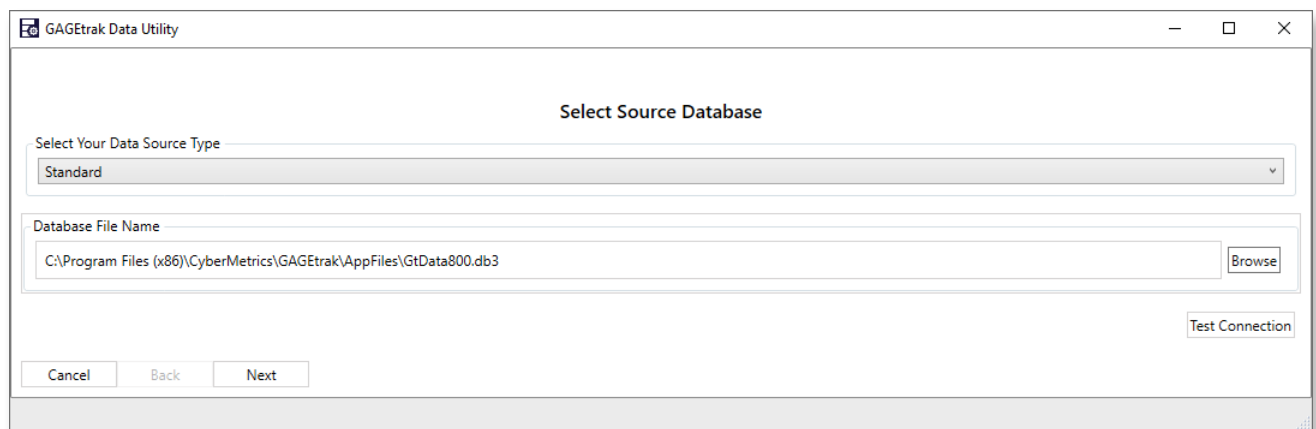
After making that selection in the window shown above, go to step 3 on the next page.

If you did not create/update a database during the installation of GAGetrak Lite 8.1.3, follow these instructions after installation:

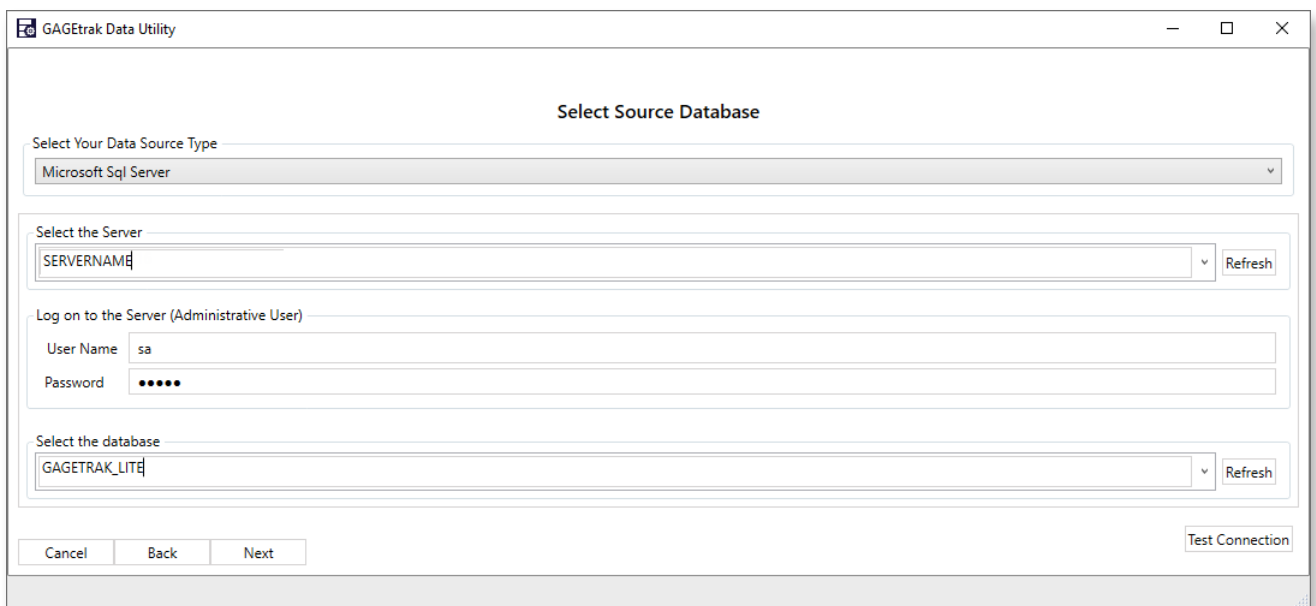
1. Click the Windows Start button and go to **All Programs -> GAGetrak Lite -> Data Utility**:



2. In the **Data Utility** window, select **Upgrade database** and then click **Next**.
3. Select your data source type: Standard (Microsoft Access) or Microsoft SQL Server. For Standard, click the **Browse** button, select your current GAGetrak Lite database and then click **Next**:



For SQL database, enter your SQL server name and credentials, select your current GAGetrak SQL database and then click **Next**.



4. Enter a **Connection Name** for the destination database and click **Next**:

GAGetrak Data Utility

Create Destination Database

Connection Name
Production Database
Enter a descriptive database connection name that you will use to refer to this connection i.e. "Fixture Database"

Select Your Data Source Type
Standard

Database File Name
C:\Program Files (x86)\CyberMetrics\GAGetrak Lite\AppFiles\GtData810.db3

SQL database:

GAGetrak Data Utility

Create Destination Database

Connection Name
Production Database
Enter a descriptive database connection name that you will use to refer to this connection i.e. "Fixture Database"

Select Your Data Source Type
Microsoft Sql Server

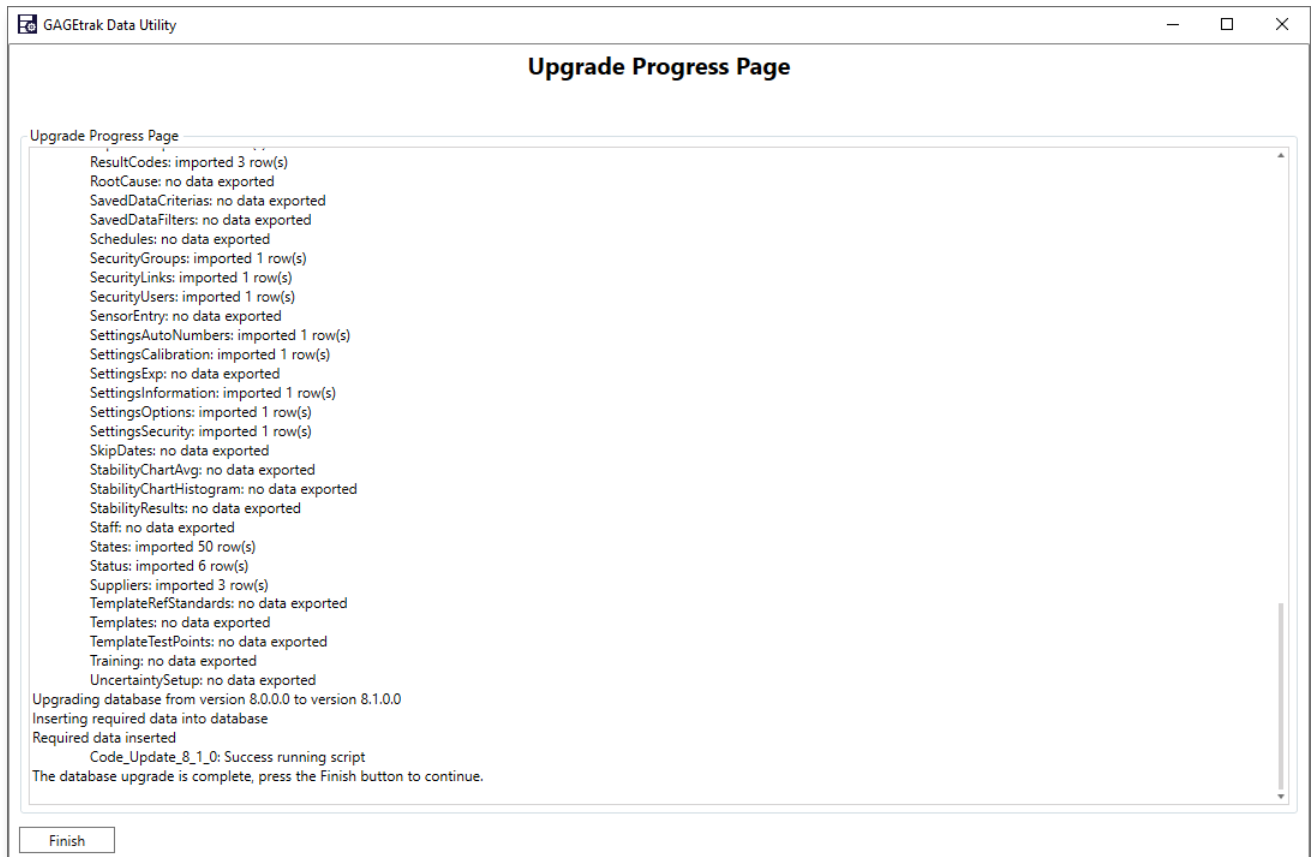
Select the Server
SERVERNAME

Log on to the Server (Administrative User)
User Name: sa
Password: ●●●●

GAGetrak Data Connection User
User Name: GTLOGIN
Password: ●●●●●●●●

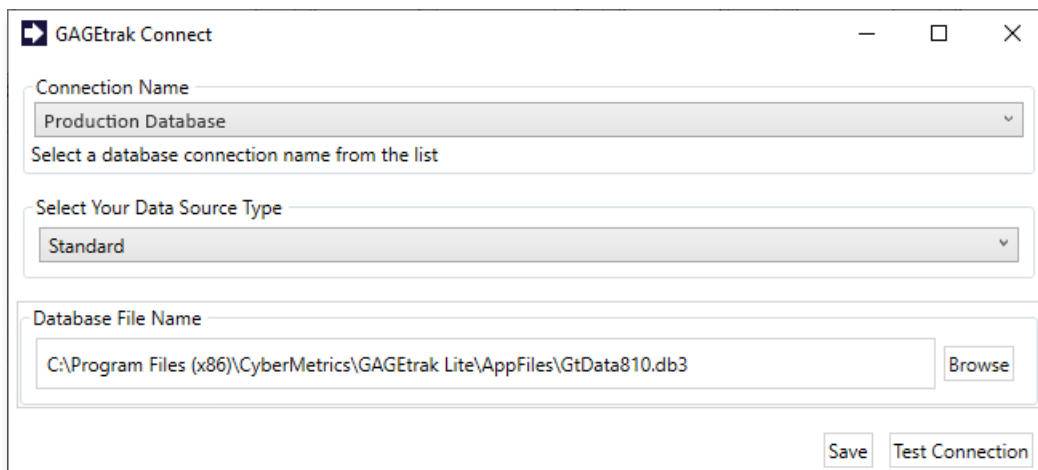
Enter database name
GTLITE_DB

5. Once the database is upgraded, click **Finish**.



Connect to the New Database

1. Depending on selections made during the installation process and/or while running the Data Utility, you may need to connect to your upgraded database. To do so, open GAGetrak Lite 8.1.3, click the caliper button in the upper left corner, select **Change Database** and then click **Current Connection**.
2. The following window will display. Select the **Connection Name**; the **Data Source Type** and **File Name** will be automatically populated. Click the **Save** button.



You are now ready to begin using GAGetrak Lite 8.1.3. If you have any issues with your software or with the creation of your new database, please contact Technical Support at 1-800-777-7020 or support@cybermetrics.com.