



CALPRO

Installation Guide

**CALIBRATION PROCEDURES FOR USE WITH
GAGETRAK PRO OR LITE VERSION 8**



U.S. GOVERNMENT RESTRICTED RIGHTS

This software and documentation are provided with RESTRICTED RIGHTS. Use, duplication, or disclosure by the Government is subject to restrictions as set forth in subdivision (b)(3)(ii) of The Rights in Technical Data and Computer Software clause at 252.227-7013. Contractor/manufacturer is CyberMetrics Corporation.

TECHNICAL SUPPORT

M-F 6:00 a.m. to 4:00 p.m., MST.

<https://gagetrak.com/support/>

TRADEMARK ACKNOWLEDGMENTS

All CyberMetrics Corporation products are trademarks or registered trademarks of CyberMetrics Corporation. All other brand and product names are trademarks or registered trademarks of their respective holders.

Entire Contents Copyright 1988-2022, CyberMetrics Corporation All Rights Reserved Worldwide.

CPP8-12072022

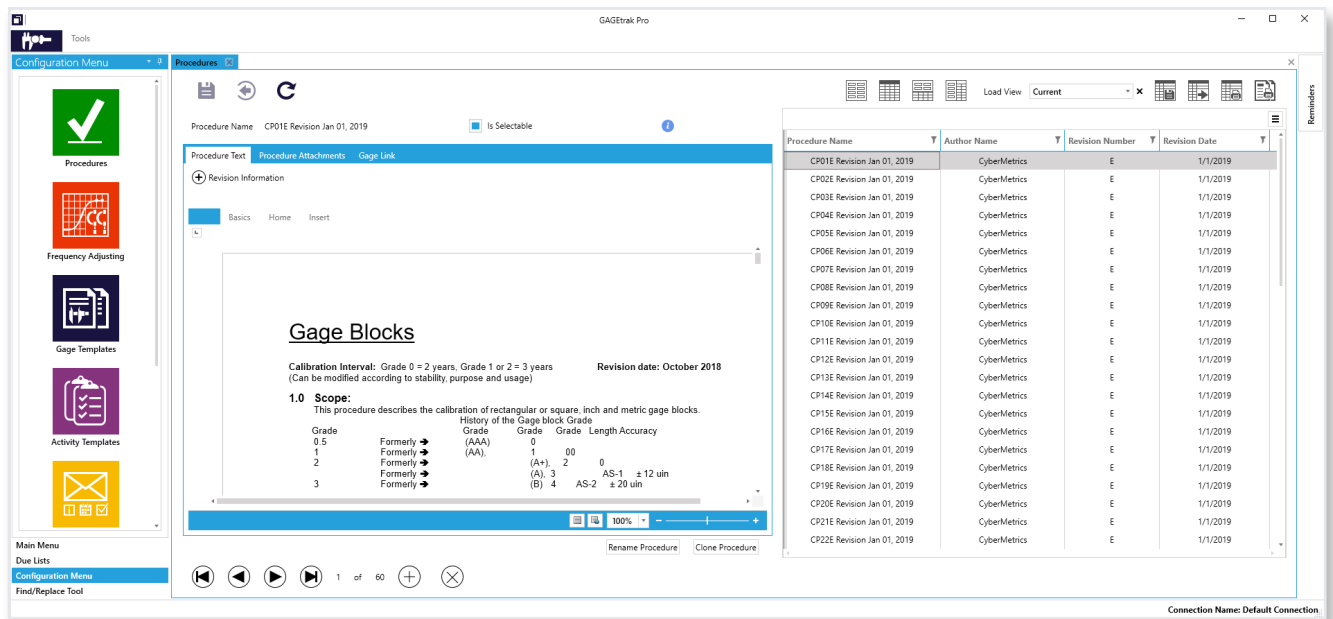
WELCOME

Thank you for choosing CalPro! An indispensable asset for any calibration department, CalPro is a database of step-by-step calibration procedures for more than sixty commonly used inspection gages, instruments and reference standards. The CalPro procedures can be imported into GAGetrak using the import utility or printed as hard copy. CalPro can also be used without GAGetrak as a library of work instructions for inclusion within your company's quality manual. If you have any issues with installation, please [contact us](#).

INSTALLATION

To import CalPro procedures, you must run the CalPro utility on a machine on which GAGetrak Pro or GAGetrak Lite is already installed and the CalPro and GAGetrak version numbers must match.

1. To begin installation of the CalPro Import Utility, double-click the .exe file on the provided media; the **Setup** screen will appear. Close any other Windows programs that are running and click **Next**.
2. If you accept the terms of the license agreement, click the appropriate radio button and click **Next**.
3. The Import Utility is now ready to be installed; click **Next**.
4. When complete, click **Finish**.
5. The **GAGetrak CalPro Utility** window will now open. Select your GAGetrak (Pro or Lite) database as the destination database for the import and then click **Next**.
6. When the import is complete, click **Finish**.
7. Launch GAGetrak (Pro or Lite) and navigate to **Procedures** from the **Configuration Menu**. The CalPro procedures have been successfully imported and are ready for use.



8. To access the procedures in PDF format, go to the Windows Start menu, select the GAGetrak (Pro or Lite) program group and click **CalPro Procedure Document**.